

DESIGN PURPOSE AND ADVANTAGES

THE 90M STEEL SEA-RIVER GENERAL CARGO VESSEL ESPECIALLY DEVELOPED AND DESIGNED FOR THE **EUROPEAN SHORT SEA** TRANSPORTATION. SHE HAS VERY REDUCED LIGHT WEIGHT AND **ENERGY EFFICIENT** VEHICLE. SHE IS OPTIMIZED ABOUT AIR DRAUGHT, MAIN DIMENSIONS, **LIGHT WEIGHT REQUIRED** POWER AND ENVIRONMENTAL EFFECTS. ALSO HAS OPTIMIZED **FULLY BOXSHAPED** CARGO HOLD INCLUDING AIR VENTILATION AND CAN CARRY **DANGEROUS GOODS** AS WELL.

MAIN DIMENSIONS

LENGTH O.A	89.96 m
LENGTH B.P.P	84.52 m
BEAM MLD.	11.42 m
DEPTH MLD.	6.25 m
DRAUGHT DESIGN	4.75 m
AIR DRAUGHT @ T=3 m	8.50 m
DEADWEIGHT @ TDESIGN	3300 ton
DISPLACEMENT	4277 ton
GROSS TONNAGE	2990 ton
NET TONNAGE	1242 ton
SPEED @ TDESIGN	11 knot

OPTI-COASTER 5200

BASIC FUNCTION	TRANSPORT OF BULK, STEEL COILS, CONTAINERS, FOREST PRODUCTS, GENERAL CARGO, ETC.
TYPE OF VESSEL CLASSIFICATION	MPP/GENERAL CARGO BUREAU VERITAS I ✕ Hull ✕ Mach AUT-UMS,IWS
SERVICE AREA	OCEAN GOING-CEVNI
FLAG	DUTCH
HEAVY CARGO	18 t/m3
EQUIPPED FOR DANGEROUS GOODS ACC.TO SOLAS REG. 19 II-2	

AUXILIARY EQUIPMENT

1 EMERGENCY /HARBOR GENERATOR SET	70 KW - 50 HZ
BWTS	300 m3/h (US COASTGUARD APPROVED)
CENTRAL COOLING WITH BOX COOLER	
1 CO2 FIRE FIGHTING SYSTEM FOR CARGO AREA	

ACCOMMODATION

HOT WATER HEATER
WEST EUROPEAN STANDARTS
WHEEL HOUSE SPLIT AIR CONDITIONER
7 SINGLE CABINS FOR CREWS & MASTER & PILOT/OWNER WITH HEATING, VENTILATION AND AIR-CONDITIONING



OPTI-COASTER 3300



GREEN SILENT EFFICIENT

PROPULSION SYSTEM

MAIN ENGINE	1471 kW YANMAR 6EY26W-750 RPM MEDIUM SPEED/ TIER III
BOW THRUSTER	350 kW E DRIVEN WITH FREQUENCY CONVERTER
PROPELLER	1 x FIXED PITCH

HOLD DETAILS

HOLD DIMENSIONS	61.80 x 9.20 x 7.75 m
HOLD CAPACITY	155560 cbft
VENTILATION	6 CHARGE PER HOUR

COMMUNICATION EQUIPMENT

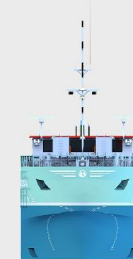
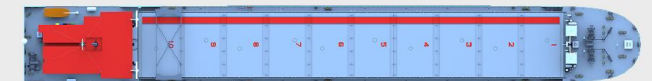
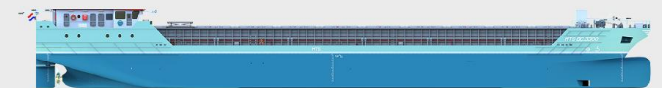
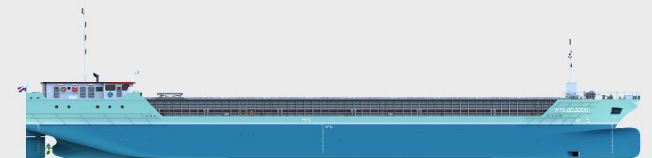
RADIO TELEPHONE SET ACC TO GMDSS FOR AREA A1 + A2 + A3

DECK LAY-OUT

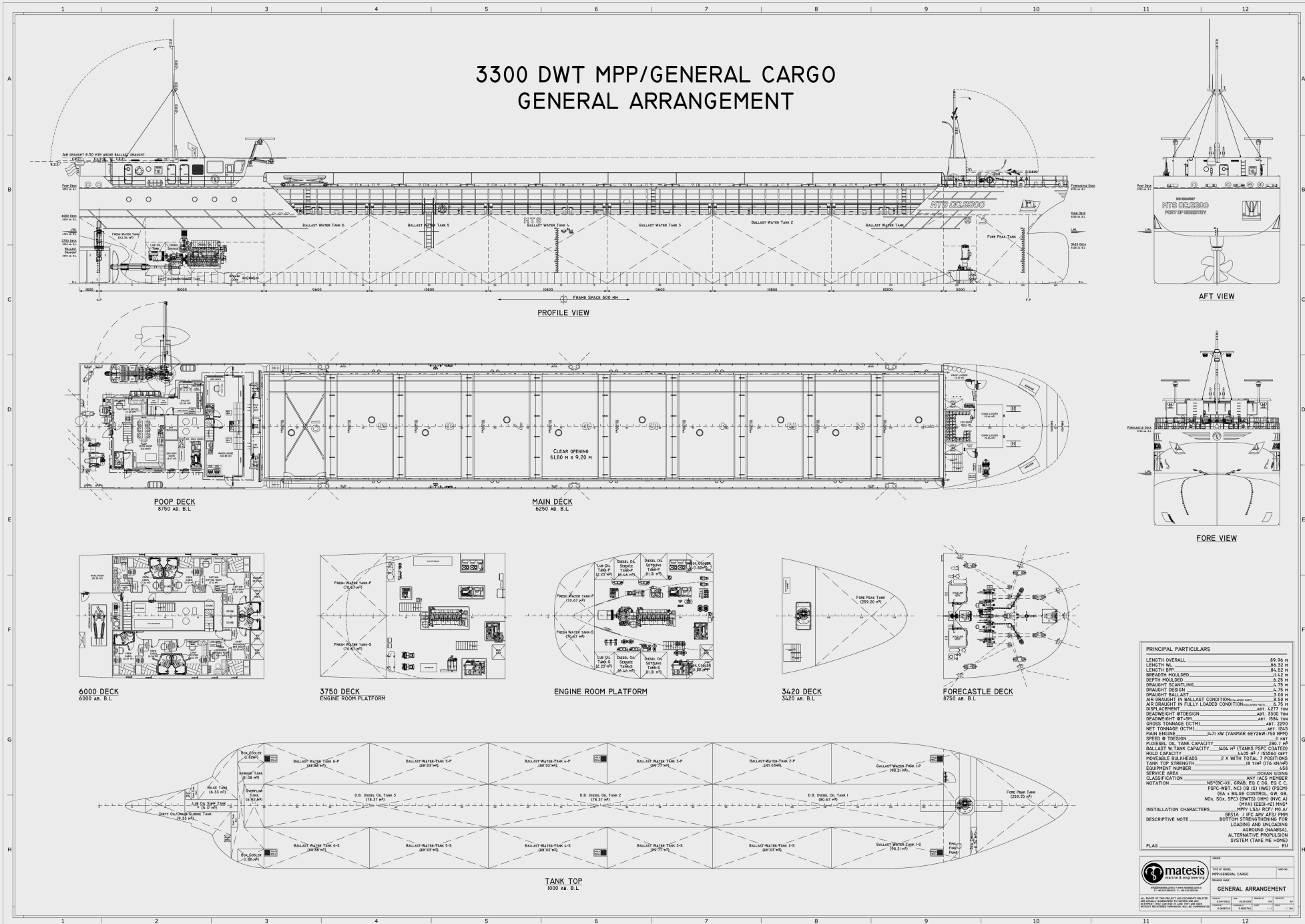
ELECTRIC-HYDRAULIC ANCHOR MOORING WINCH	2 FORE 2 AFT
---	-----------------

OPTIONS

HIGH FLAP RUDDER
SHAFT GENERATOR
LOADING AGROUND
FINISH-SWEDISH ICE 1A/1B
CONTROLLABLE PITCH PROPELLER
COMPOSITE PONTOON HATCHES COVERS



3300 DWT MPP/GENERAL CARGO GENERAL ARRANGEMENT



PRINCIPAL PARTICULARS	
LENGTH OVERALL	80.00 M
LENGTH WL	86.32 M
BREADTH MOULDED	11.42 M
DEPTH MOULDED	4.25 M
DRAUGHT SCANTLING	4.75 M
DRAUGHT DESIGN	4.75 M
DRAUGHT BALLAST	3.00 M
AIR DRAUGHT IN BALLAST CONDITION (FULLY LOADED)	8.82 M
AIR DRAUGHT IN FULLY LOADED CONDITION (FULLY LOADED)	6.75 M
DISPLACEMENT	ART: 3277 TON
DEADWEIGHT @DESIGN	ART: 3300 TON
DEADWEIGHT @1.05 TON	ART: 3584 TON
GROSS TONNAGE (ICM)	ART: 2200
NET TONNAGE (ICM)	ART: 1245
MAIN ENGINE	3x11 MW (MANBIR GET26W-755 590HP)
SPEED @ 10.5KPH	11.0 NT
M DIESEL OIL TANK CAPACITY	1100.00 M ³
BALLAST W TANK CAPACITY	1100.00 M ³ (TANKS PSPC COATED)
HOLD CAPACITY	1100.00 M ³ (TANKS PSPC COATED)
MOVABLE BULKHEADS	2 X WITH TOTAL 7 POSITIONS
TANK TOP STRENGTH	18 TON (EIA APPROV)
EQUIPMENT NUMBER	658
SERVICE AREA	OCEAN GOING
NOTATION	NS*BC-XI, GRAB, IS, C, DO, E, C, C, PSC-WET, NCJ (IB IS) (DWS) (CRCO) (EA - BULGE CONTROL, SW, GR, NOX, SOX, SPC) (BWT) (DMS) (INVC-A) (DRA) (DESK) (IMPCT)
INSTALLATION CHARACTERS	ANY IACS MEMBER
DESCRIPTIVE NOTE	BESTA / JAC AND ALSO FROM BOTTOM STRENGTHENING FOR LOADING AND UNLOADING AROUND (UNABRA). ALTERNATIVE PROPELLION SYSTEM (TAKE THE HOME) EU

matisis
MARINE & ENGINEERING

TYPE OF VESSEL: MPP-GENERAL CARGO

GENERAL ARRANGEMENT

ALL RIGHTS OF THIS PROPERTY ARE RESERVED BY MATESIS MARINE & ENGINEERING. ANY REPRODUCTION OR TRANSMISSION OF THIS DOCUMENT WITHOUT THE WRITTEN PERMISSION OF MATESIS MARINE & ENGINEERING IS STRICTLY PROHIBITED.

MATESIS MARINE & ENGINEERING
 SANAYI MAH. TEKNOPARK BUL. 1/1A D:105 ISTANBUL TEKNOPARK PENDIK, ISTANBUL, TURKEY
 PHONE +90 216 290 43 13 FAX +90 216 290 43 14
 WWW.MATESIS.COM.TR INFO@MATESIS.COM.TR